

Beef Cattle Open

LOCAL RULES

Receiving—Tuesday, August 5 until 8 pm

Judging—Saturday, August 9 at 9 am

Release—Sunday, August 10 at 8 pm

Entry Fee—\$8.00 per entry per class

LIMITS—Limit 10 animals per exhibitor. Limited to space available.

1. Entry preference will be given to: Nevada County Junior Exhibitors; Nevada County Senior Exhibitors; Exhibitors from Placer, Sierra and Yuba Counties; all other California counties. Legal residency shall be the determining factor.
2. All females twenty-four (24) months of age or older on the beginning day of the Fair must: a) have a calf at side, b) show obvious signs of pregnancy, or c) have a veterinarian's certificate of pregnancy.
3. It is up to the exhibitors to make our Fair an attractive show to the public. No more than one day's bedding and feed will be allowed in the barns due to the limited space. One row of straw may be stored behind the animals.
4. The Livestock Superintendent may, at his discretion, combine classes if less than three animals are entered in a class.
5. The Fair will provide one bale of straw per animal. Additional straw must be purchased by exhibitor.

PREMIUMS OFFERED PER CLASS

1st-\$65	2nd-\$45	3rd-\$35	4th-\$25
5th-\$15	6th-\$10	7th-\$5	

BEEF CATTLE BREEDS:

DIVISION 4000—BREED WITH THE MOST ENTRIES

DIVISION 4001—BREED WITH THE 2ND MOST ENTRIES

DIVISION 4002—BREED WITH THE 3RD MOST ENTRIES

DIVISION 4003—ALL OTHER REGISTERED BREEDS

Note: The Fair Staff will determine the specific breed for each division after all entries have been received. For the purpose of completing your entry form, please use Division 4000.

When entering a breeding class on-line, it is imperative that all information regarding registration number, name, breed, sire, and dam be filled out correctly and completely.
Thank you.

Class—Females Date of Calving

1. Junior Heifer Calf Jan. 1, 2008 - over 4 months
2. Senior Heifer Calf Sept. 1 - December 31, 2007
3. Summer Yearling Heifer May 1 - August 31, 2007
4. Junior Yearling Heifer January 1 - April 30, 2007
5. Senior Yearling Heifer March 1 - Dec. 31, 2006
6. Cow/Calf pair Calves born in 2008
Any recognized cow of recognized breed with calf at side born on or after January 1, 2008. Calf must be cow's natural calf, not an embryo transplant. Must be eligible for registration. It is recommended that the judge give the calf approximately 25% of his consideration when placing the class. Note: Breed Champions of Cow/Calf will come back into the ring to compete for Grand Champion Cow/Calf.

Class—Bulls Date of Calving

7. Junior Bull Calf January 1, 2008 - over 4 months
8. Senior Bull Calf Sept. 1 -December 31, 2007
9. Summer Yearling Bull May 1 - August 31, 2007
10. Junior Yearling Bull January 1 - April 30, 2007
11. Senior Yearling Bull March 1- Dec. 31, 2006

Class—Groups

All owned by one exhibitor and entered as individuals. One entry per exhibitor per class.

12. Pair of Females—two bred by exhibitor
13. Three bulls
14. Junior Get of Sire—three animals, summer yearling or younger, get of same bull, both sexes represented.
15. Get of Sire—four animals, get of same bull, both sexes represented.

Feeder Pens, Replacement Heifer Pens and Commercial Cow/Calf

LOCAL RULES

Judging—Saturday, August 9 following the Open Beef Show. All breeds judged together.

Entry Fee—\$10.00 per entry per class

LIMITS

1. Two entries per class per exhibitor.
2. The Fair may exercise the option of limiting exhibitors to one entry per class in the "pen" divisions should entry counts exceed the number of permanent pens available.

PREMIUMS OFFERED PER CLASS

1st-\$100	2nd-\$70	3rd-\$50	4th-\$40	5th-\$30
-----------	----------	----------	----------	----------

LIVESTOCK BEEF

DIVISION 4004—FEEDER PEN (Pen of 3)

Feeder steer class is for crosses or full bloods with no breed restrictions. All animals must be dehorned and branded, cleaned, but not groomed. All animals must be owned by exhibitor. Brand inspection required.

Class

1. Three steers (averaging 400 - 700 pounds)

All breeds judged together - By registered sire.
Replacement heifer and Commercial Cow/Calf classes are for commercial cattle only.
No registered cattle permitted.

By the signature on the entry form, as owner or agent, the exhibitor also certifies that the sire of each animal entered in the following class for grade animals was either registered or purebred.

DIVISION 4005—REPLACEMENT HEIFER PENS (Pen of 3)

Class

1. Three heifers

DIVISION 4006 —A PAIR OF COMMERCIAL COW/ CALVES

Class

1. A Pair of Commercial Cow/Calves

Prospect Steers Jackpot Show

This class is intended to enhance the Nevada County beef market and provide local youth the opportunity to preview animals that will be prospective market steers for the 2009 Nevada County Fair. The class will be judged on quality and marketability of the steer.

LOCAL RULES

Receiving—Tuesday, August 5, by 12:30 pm

Official Weigh-in: Tuesday, August 5, 12:30 pm following market steer weigh-in.

Judging —Saturday, August 9 following the Open Beef Show. All breeds judged together.

Release—Sunday, August 10 at 8 pm or at the direction of the Livestock Superintendent.

Entry Fee —\$10.00 plus \$40 Add Back per animal

All classes and jackpot amounts are subject to change, depending upon the number of participants.

LIMITS

1. Nevada County steers - steers bred and raised in Nevada County only.
2. Limited to first 30 entries.

3. Calves must be born during the 2008 calendar year.
4. Calves must be dehorned and castrated.
5. Cows are allowed for calves who have not been weaned.
6. Animals shown as breeding animals are not eligible.
7. Animals must be trained to lead easily and handle properly through processing and in the show ring. (If a steer is deemed to not be safe or in bad condition, it will be sifted and must be removed from the Fairgrounds.)
8. Rope or nylon halters and neck ropes will be used.
9. Steers must weigh a maximum of 650.

DIVISION 4007—NEVADA COUNTY PROSPECT STEER

Class

1. Steer, weighing between 450 pounds and 650 pounds.

Dairy Cattle Open

LOCAL RULES

Receiving —Tuesday, August 5, 8 am - 8 pm

Judging —Friday, August 8 following judging of Junior Dairy Cattle

Entry Fee —\$8.00 per entry per class

LIMITS

Limit 10 animals per exhibitor. Limited to space available.
Two animals per class per exhibitor.

1. The Fair will provide one bale of straw per animal. Additional straw must be purchased by exhibitor.

PREMIUMS OFFERED PER CLASS

1st-\$65 2nd-\$45 3rd-\$35 4th-\$25 5th-\$15
6th - \$10 7th-\$5

DIVISION 4008—REGISTERED PUREBRED DAIRY CATTLE

Class

- | Class | Date of Calving |
|--------------------|----------------------------------|
| 1. Calf | September 1 - April 5, 2008 |
| 2. Junior Yearling | Sept. 1, 2006 - August 31, 2006 |
| 3. Senior Yearling | September 1, 2006 - Feb 28, 2007 |
| 4. Cows | Prior to September 1, 2006 |

Groups

5. Pair of Females

LIVESTOCK BEEF

DIVISION 4009—GRADE OR UNREGISTERED PUREBRED DAIRY CATTLE

LOCAL RULES

Receiving —Tuesday, August 5, 8 am - 8 pm

Judging —Friday, August 8 following judging of Junior Dairy Cattle

Entry Fee —\$8.00 per entry per class

LIMITS

Nevada County Residents Only. Two animals per class per exhibitor.

1. The Fair will provide one bale of straw per animal. Additional straw must be purchased by exhibitor.

Class	Date of Calving
1. Calf	September 1, 2007 - April 5, 2008
2. Junior Yearling	March 1 - August 31, 2007
3. Senior Yearling	September 1, 2006 - Feb 28, 2007
4. Cows	Prior to September 1, 2006

Groups

5. Pair of Females

Beef/Junior

Registered Purebred Breeding Animals

LOCAL RULES

Receiving—Tuesday, August 5, 8 am - 8 pm

Judging—Friday, August 8 following judging of steers

Entry Fee—\$5.00 per entry per class

LIMITS

Entry preference: Nevada County juniors; junior exhibitors from Placer, Sierra and Yuba counties; all other counties.

1. The Fair will provide one bale of straw per animal. Additional straw must be purchased by exhibitor.
2. *Females*: all females 24 (twenty-four) months of age or older at the beginning day of the Fair must: a) have a calf at side, b) show obvious signs of pregnancy, or c) have a veterinarian's certificate of pregnancy.

PREMIUMS OFFERED PER CLASS

1st-\$50 2nd-\$35 3rd-\$25 4th-\$20 5th-\$15

BEEF CATTLE BREEDS:

DIVISION 4100—BREED WITH THE MOST ENTRIES

DIVISION 4101—BREED WITH THE 2ND MOST ENTRIES

DIVISION 4102—ALL OTHER REGISTERED BREEDS

Note: The Fair Staff will determine the specific breed

for each division after all entries have been received. For the purpose of completing your entry form, please use Division 4100.

Class—Females

Date of Calving

1. Junior Heifer Calf Jan. 1, 2008 - April 5, 2008
2. Senior Heifer Calf Sept. 1 - December 31, 2007
3. Summer Yearling Heifer May 1 - Aug 31, 2007
4. Junior Yearling Heifer January 1 - April 30, 2007
5. Senior Yearling Heifer Mar. 1- December 31, 2006
6. Cow/Calf Pair Calves born in 2008

Any recognized cow of recognized breed with calf at side born on or after January 1, 2008. Calf must be cow's natural calf, not an embryo transplant.

Must be eligible for registration. It is recommended that the judge give the calf approximately 25% of his consideration when placing the class. Note: Breed Champions of Cow/Calf will come back into the ring to compete for Grand Champion Cow/Calf.

Class—Bulls

Date of Calving

7. Junior Bull Calf January 1, 2008 - April 5, 2008
8. Senior Bull Calf Sept. 1 -December 31, 2007
9. Summer Yearling Bull May 1 - August 31, 2007
10. Junior Yearling Bull January 1 - April 30, 2007
11. Senior Yearling Bull March 1- December 31, 2006

Class—Groups

12. Pair of Females - bred by exhibitor

Beef/Junior

Grade or Unregistered Animals by Purebred Sire

LOCAL RULES

Entry details are the same as Registered Purebred Breeding Animals.

LIMITS

Two animals per class per exhibitor.

1. Animals entered in the following classes may not be entered in any other class of the Beef Cattle Divisions.
2. By the signature, as the owner or agent, on an entry form, the exhibitor also certifies that the sire of each animal entered in the following division for grade animals was either registered or purebred.
3. Animals which have been registered as a purebred by a purebred breed association cannot be entered in this division.
4. A permanent eartag or tattoo number is required.

LIVESTOCK BEEF

PREMIUMS OFFERED PER CLASS

1st-\$30 2nd-\$25 3rd-\$20 4th-\$15

DIVISION 4103 — JUNIOR GRADE OR UNREGISTERED FEMALE

Class—Females Date of Calving

1. Junior Heifer Calf Jan. 1, 2008 - over 4 months
2. Senior Heifer Calf Sept. 1 - December 31, 2007
3. Summer Yearling Heifer May 1 - Aug 31, 2007
4. Junior Yearling Heifer January 1 - April 30, 2007
5. Senior Yearling Heifer Mar. 1- December 31, 2006
6. Cow/Calf Pair Calves born in 2008

Dairy Cattle/Junior Registered Purebred Animals

LOCAL RULES

Receiving—Tuesday, August 5, 8 am - 8 pm

Judging—Friday, August 8, following judging of breeding animals.

Entry Fee—\$6.00 per entry per class

LIMITS—Nevada County Residents Only.

1. Two animals per class per exhibitor.
2. The Fair will provide one bale of straw per animal. Additional straw must be purchased by exhibitor.

PREMIUMS OFFERED PER CLASS

1st-\$60 2nd-\$50 3rd-\$40 4th-\$30

DIVISION 4150 - REGISTERED PUREBRED ANIMALS

Class Date of Calving

1. Calf Sept. 1, 2007 - April 5, 2008
2. Junior Yearling March 1, 2007 -August 31, 2007
3. Senior Yearling Sept. 1, 2006 - February 28, 2007
4. Cows Prior to September 1, 2006

Groups

5. Pair of Females

Grade or Unregistered Purebred

LOCAL RULES

Entry Fee—\$3.00 per entry per class

LIMITS—Two animals per class per exhibitor.

PREMIUMS OFFERED PER CLASS

1st-\$30 2nd-\$25 3rd-\$20 4th-\$15

DIVISION 4151 - GRADE OR UNREGISTERED PUREBRED ANIMALS BY REGISTERED SIRE

Class Date of Calving

1. Calf January 1, 2008 - April 5, 2008
2. Junior Yearling January 1 - April 30, 2007
3. Senior Yearling March 1 - December 31, 2007
4. Cows Prior to September 1, 2006

Groups

5. Pair of Females

Dairy Cattle/Junior Showmanship

Junior Dairy Cattle Showmanship will be judged following the judging of breeding classes on Friday, August 8. First place Senior Showmanship will compete Saturday, August 9 for Master Showmanship. See page 128 for showmanship class definitions.

NOVICE & JUNIOR SHOWMANSHIP Ribbons Only - 1st thru 8th Place

SENIOR SHOWMANSHIP Premiums Offered Per Class

1st	2nd	3rd	4th	5th	6th	7th	8th
\$20	\$18	\$16	\$14	\$12	\$10	\$8	\$6

DIVISION 4200 — FFA NOVICE DAIRY CATTLE SHOWMANSHIP

Class

1. Novice

DIVISION 4201— FFA SENIOR DAIRY CATTLE SHOWMANSHIP

Class

1. Senior

DIVISION 4202— 4-H/GRANGE NOVICE & JUNIOR DAIRY CATTLE SHOWMANSHIP

Class

1. Novice
2. Junior

DIVISION 4203— 4-H/GRANGE SENIOR DAIRY CATTLE SHOWMANSHIP

Class

1. Senior

Single Feeder Beef

LIMITS - Two animals per exhibitor
Entry Fee-\$3.00

PREMIUMS OFFERED PER CLASS

1st Group	Prime	\$12.00
2nd Group	Choice	\$9.00
3rd Group	Standard	\$4.00

DIVISION 4204—FFA SINGLE FEEDER BEEF
DIVISION 4205—4-H/GRANGE SINGLE FEEDER BEEF

Class

1. Feeder Steer - 300-500 pounds
2. Feeder Steer - 501-899 pounds

Market Beef

LOCAL RULES

Mandatory Ear Tagging: April 5, 2008 8 am - 12 pm
Official Weigh-in: Tuesday, August 5, 11:30 am - 12:30 pm
Judging—Friday, August 8 at 9 am
Entry Fee—\$15.00 per entry per class

LIMITS

Open to Nevada County Only. One market animal per exhibitor. Exhibitor may not have sold a market animal at any other county fair this year.

1. It is the intent of the Division of Fairs and Expositions that the quality standards established for market animals be maintained. Therefore, classifications will be subject to change in the event there are changes made in Federal grading.
2. Market beef will weigh a minimum of 1000 pounds and may be divided into weight lots as desired by management for convenience in judging.
3. Any steer weighing over 1300 pounds will not be "sifted" from the Livestock Auction, but will not be paid for over 1300 pounds.
4. All market beef must be individually owned by the exhibitor for 120 *consecutive* days prior to the opening day of the Fair. All market beef must be present for the mandatory ear tagging on April 5, 2008. Proof of ownership papers must be presented.
5. The Fair will provide one bale of straw per animal. Additional straw must be purchased by the exhibitor.
6. **Danish System of Judging**

Market Ready: Market steers projected to have sufficient fat deposition to meet the marbling specifications for USDA Prime, Choice, or Select+ quality grades.

Not Market Ready: Market steers lacking evidence of sufficient fat deposition to produce a desirable consumer product. Steers projected to grade USDA select- or lower.

DIVISION 4300—FFA SINGLE MARKET BEEF
DIVISION 4301—4-H/GRANGE SINGLE MARKET BEEF

Class

1. Steer, minimum weight 1000 pounds

Beef/Junior Showmanship

Beef Showmanship will be judged following the judging of market classes on Friday, August 8. First place Senior Showmanship will compete Saturday, August 9 for Master Showmanship.
See page 128 for showmanship class definitions.

NOVICE & JUNIOR SHOWMANSHIP Ribbons Only - 1st thru 8th Place

SENIOR SHOWMANSHIP—Premiums Offered Per Class							
1st	2nd	3rd	4th	5th	6th	7th	8th
\$20	\$18	\$16	\$14	\$12	\$10	\$8	\$6

DIVISION 4302 — FFA NOVICE BEEF SHOWMANSHIP

Class

1. Novice

DIVISION 4303 — FFA SENIOR BEEF SHOWMANSHIP

Class

1. Senior

DIVISION 4304 — 4-H/GRANGE NOVICE & JUNIOR BEEF SHOWMANSHIP

Class

1. Novice
2. Junior

DIVISION 4305 — 4-H/GRANGE SENIOR BEEF SHOWMANSHIP

Class

1. Senior

Owned and Bred By

A cash prize of \$50 for First Place and \$35 for Second Place will be awarded to the Junior exhibitor whose Champion or Reserve Market Champion animal was also bred by the exhibitor. A notation must be made on the entry sheet at the time of entry. Without notation at time of entry, exhibitor will be disqualified.

DIVISION 4400 - BEEF, OWNED AND BRED BY

Class

1. Beef, owned and bred by

Salt Lick Art

LOCAL RULES

Receiving—Tuesday, August 5 - any time

Judging—Wednesday, August 6 - some time

Deliver—to livestock area. A special display area will be established by Fair time.

Entry Fee—none

1. All entries must be salt blocks licked by cows or other livestock, but no wildlife. Blocks licked by humans will not be permitted. Licks may be subject to DNA testing.
2. Each entry must have a title. Please type or write the "sculpture's" title and specie on a 3x5 card and secure it to the artwork.

PREMIUMS OFFERED PER CLASS

1st-\$15

2nd-\$10

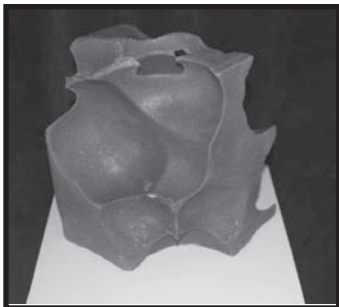
3rd-\$5

American system of judging.

DIVISION 4500

Class

1. Beef salt lick
2. Any other specie, please specify



"Lunar Beef Scape"

Awards

BEEF CATTLE—OPEN

Cow/Calf Grand Champion Award and Plaque
Division 4000-4003, Class 6

Sponsored by the Art & Caroline Whitney

Best Feeder Pen Award Plaque

Division 4004

Sponsored by the Nevada County Farm Bureau

Rosette Awards:

- Supreme Champion Bull, Champion Bull, Reserve Champion Bull
- Supreme Champion Female, Champion Female, Reserve Champion Female
- Best Feeder Pen, Reserve Feeder Pen
- Best Replacement Heifer Pens, Reserve Replacement Heifer Pens
- Best Commercial Cow/Calves, Reserve Commercial Cow/Calves

DAIRY CATTLE—OPEN

Champion Dairy Cattle Award Plaque

Division 4008-4009

Sponsored by Harold Mabes & Lady

Rosette Awards:

- Champion Dairy Cattle, Reserve Champion Dairy Cattle

BEEF CATTLE—JUNIOR

Division 4103

Junior Supreme Champion Bull Award Plaque

Sponsored by Rolly's Body Shop, Inc.

Junior Supreme Champion Female Award Plaque

Sponsored in loving memory of Gladys Short

Junior Champion Grade Female Award Plaque

Sponsored by Rolly's Body Shop, Inc.

Rosette Awards:

- Supreme Champion Bull, Reserve Supreme Champion Bull, Champion Bull, Reserve Champion Bull
- Supreme Champion Female, Reserve Supreme Champion Female, Champion Female, Reserve Champion Female

Awards

DAIRY CATTLE – JUNIOR

Junior Champion Dairy Cattle Award Plaque

Division 4150-4151

Sponsored by Mike & Leslie Blagg

Rosette Awards:

- Champion Dairy Cattle, Reserve Champion Dairy Cattle

BEEF CATTLE – SINGLE FEEDER BEEF

Best FFA Feeder Beef Award Plaque

Division 4204

Sponsored by the Art & Caroline Whitney

Best 4-H/Grange Feeder Beef Award Plaque

Division 4205

Sponsored by Harold Mabes & Lady

BEEF – MARKET

Division 4300-4301

Supreme Champion Market Beef

- Award Plaque – sponsored by Mike & Leslie Blagg
- Belt Buckle – sponsored by Tahoe Cattlemen's Association
- Banner – sponsored by 10 Minute Oil Change & Car Wash
- \$100 Savings Bond - sponsored by Kyle, Donna & Kendal Bloche
- Rosette Ribbon

Reserve Supreme Champion Market Beef

- Award Plaque—sponsored by Rolly's Body Shop
- Banner – sponsored by 10 Minute Oil Change & Car Wash
- \$50 Savings Bond - sponsored by Bill Schultz
- Rosette Ribbon

FFA Champion Market Beef

- Award Plaque – sponsored by Quail Glen Cattle
- Banner – sponsored by 10 Minute Oil Change & Car Wash
- \$100 Savings Bond – sponsored by Ridge Feed & Supply
- Rosette Ribbon

FFA Reserve Champion Market Beef

- Banner – sponsored by 10 Minute Oil Change & Car Wash
- \$50 Savings Bond – sponsored by Ridge Feed & Supply
- Rosette Ribbon

4-H/Grange Champion Market Beef

- Award Plaque – sponsored by Rolly's Body Shop
- Banner – sponsored by 10 Minute Oil Change & Car Wash
- \$100 Savings Bond – sponsored by Ridge Feed & Supply
- Rosette Ribbon

4-H/Grange Reserve Champion Market Beef

- Banner – sponsored by 10 Minute Oil Change & Car Wash
- \$50 Savings Bond – sponsored by Ridge Feed & Supply
- Rosette Ribbon

BEEF CATTLE – GROUP OF STEERS

Best County Group of Steers Award Plaque

Sponsored by Brighton Greens Veterinary Hospital

Best FFA Chapter Group of Steers Award Plaque

Sponsored by Harold Mabes & Lady

Best 4-H/Grange Club Group of Steers Award Plaque

Sponsored in loving memory of William D. Sammons

Rosette Awards:

- Best County Group of Steers, Best FFA Chapter Group of Steers, Best 4-H/Grange Group of Steers

BEEF – SHOWMANSHIP

DIVISION 4302-4305

FFA Novice Beef Showmanship

First Place Award

Plaque—sponsored in loving memory of William D. Sammons

FFA Senior Beef Showmanship First Place Award

Plaque—sponsored in loving memory of Henry Magonigal

4-H/Grange Senior Beef Showmanship First Place

Award Plaque—sponsored in loving memory of Dick Jones

4-H/Grange Junior Beef Showmanship First Place

Award Plaque—sponsored by Art & Caroline Whitney

4-H/Grange Novice Beef Showmanship First Place

Award Plaque—sponsored by Art & Caroline Whitney

LIVESTOCK BEEF

BEST OF DIVISION 4500 - SALT LICK ART

\$25 cash sponsored by Art & Caroline Whitney

OUTSTANDING BEEF EXHIBIT AWARD

4-H/Grange award sponsored by Frances Gates Exhibits will be judged by the Nevada County Farm Bureau. Please see page 94 for judging criteria

SPECIAL OVERALL LIVESTOCK AWARD FOR EITHER BEEF, SHEEP, SWINE OR GOAT

4-H/Grange Most Outstanding Exhibit - \$150 sponsored by Live Wire Products, Inc.

FFA Most Outstanding Exhibit - \$150 sponsored by Live Wire Products, Inc.

CLEAN PEN AWARD

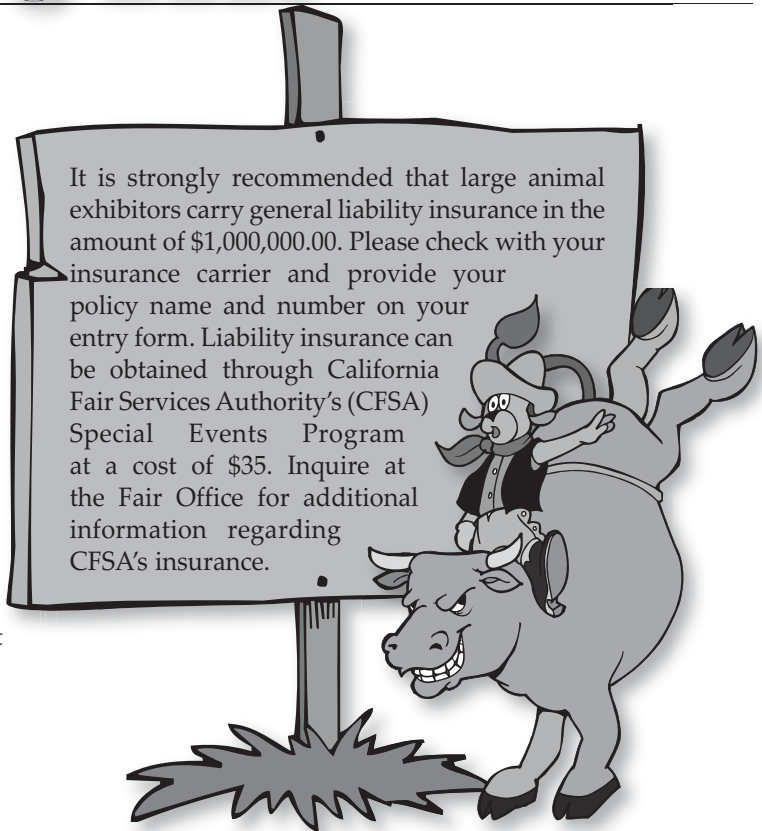
\$50 cash award awarded to the exhibitor with the cleanest and most presentable barn area, sponsored by Art & Caroline Whitney

HORNED HEREFORD AWARD

Inquire at livestock office for information.

POLLED HEREFORD SHOWMANSHIP AWARD

Inquire at livestock office for information.



Steer or Heifer Obstacle Course

Sponsored by Placer Nevada County Cattle Women

Wednesday, August 6, at 6:30 pm in The Beef Ring
Great Prizes!

1st-\$25, 2nd-\$20, 3rd-\$15, 4th-\$10, 5th-\$5

Pre register at the Fair Office by Friday, August 1. Exhibitors must wear long pants, shirt, shoes or boots.

HUGHES BODY & FENDER

- ✓ Foreign & Domestic ✓ Collision Repair
- ✓ Quality Painting ✓ Expert Color Matching
- ✓ Towing Available

**I-CAR®
GOLD
CLASS**

Professionals
EXCELLENCE
THROUGH
TRAINING

FREE ESTIMATES

477-1394



Master Body/Paint
Technician
25 Yrs. Exp.

962 Golden Gate Terrace • Grass Valley

Quick Response

Septic Services & Portable Toilets

Compare Our Prices

Save Your Money

24 Hr. Service

Senior Discount

All Plumbing Repairs

(530) 273-7538

Richard Davis

P.O. Box 3313, Grass Valley, CA 95945

Bonded/Lic #727243

Mention this ad!
"Unstuffers" Enzymes
for your septic tank.
Buy 1 get one jar free!